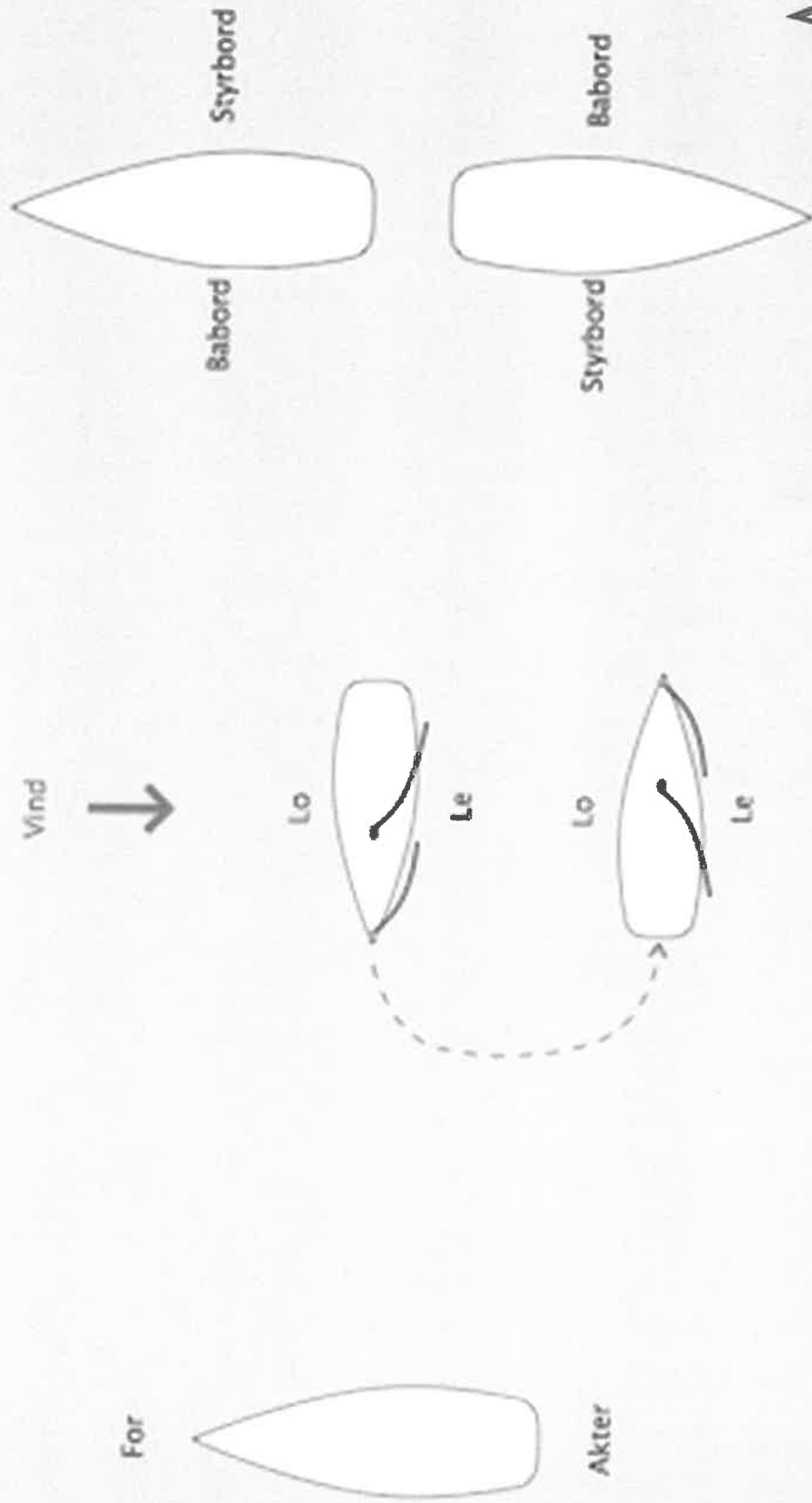


Retninger til sjøs





Vind
→

Vindøyet/Slag

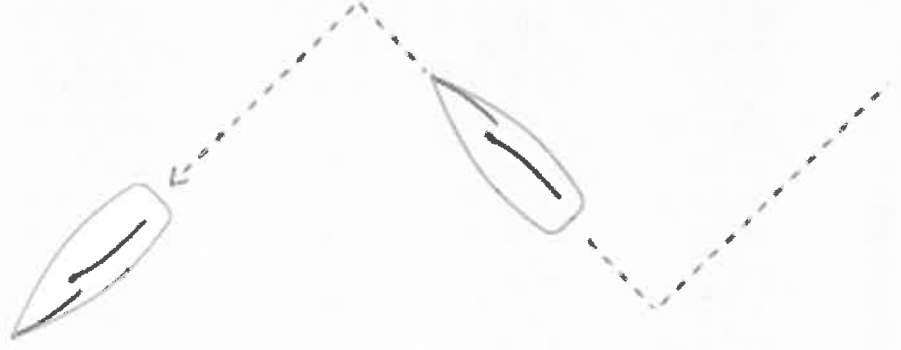


Styre eller skjøte?

Vind



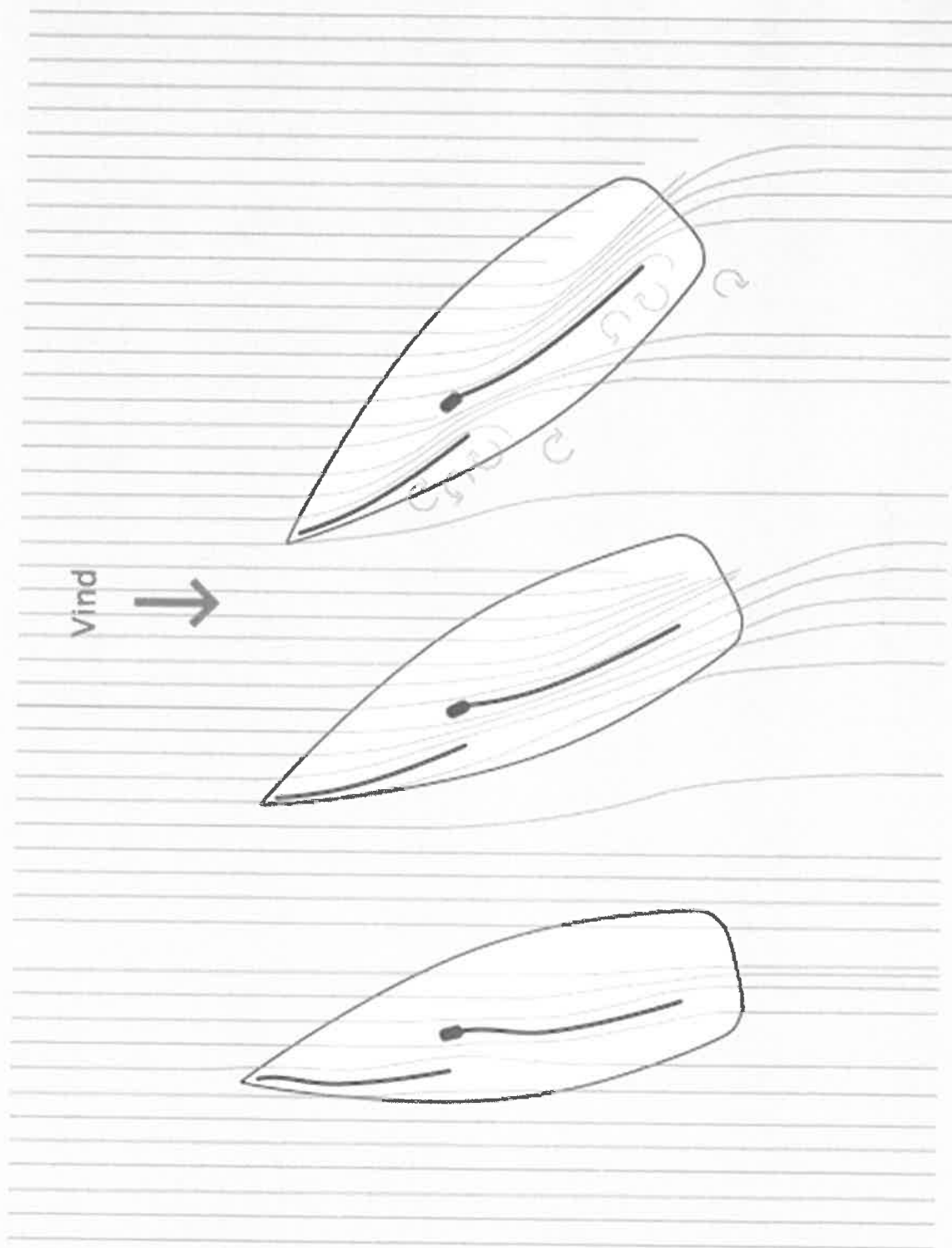
Vind



Seile mot vinden?



Kryssvinkel





Wind



Loffe



Falle av





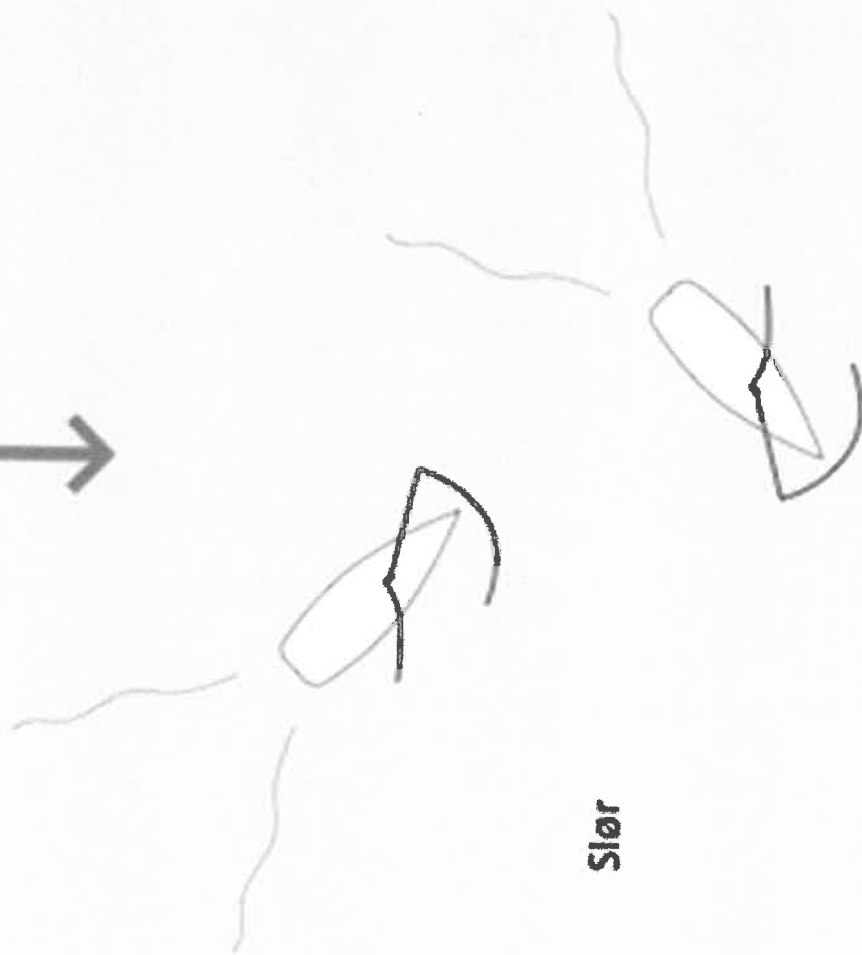
Vind →



Slag



Vind



Slør

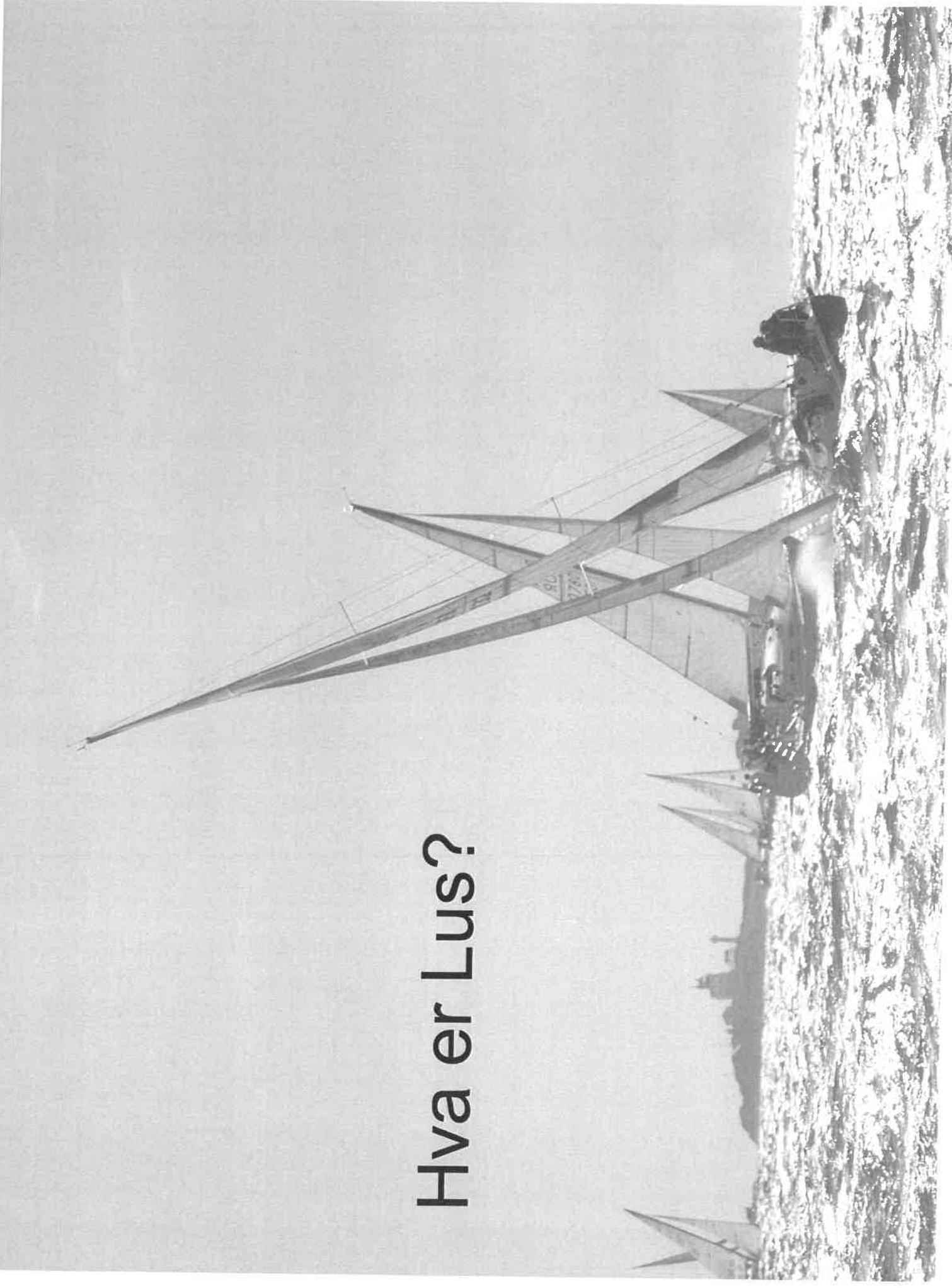


Jibb

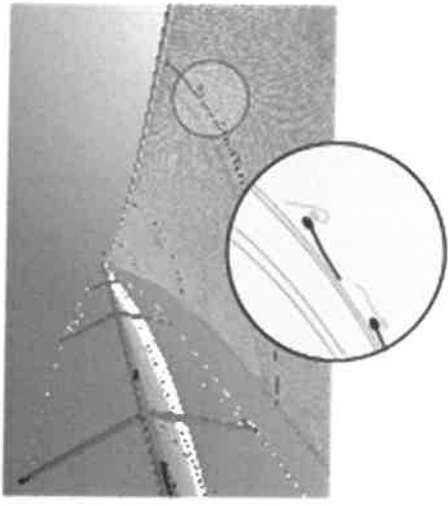
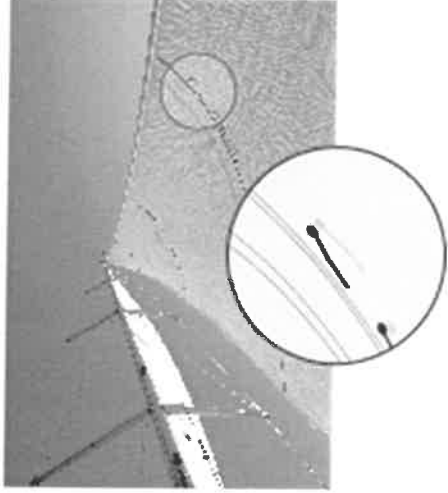
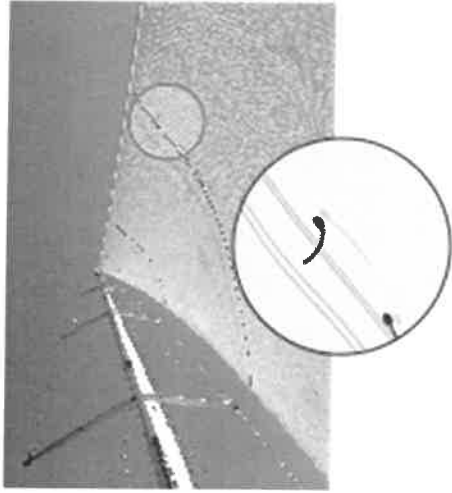


Vind
↑

Hva er Lus?



Styr etter lusene:





Vind
↑

Babord halser



Styrbord halser

